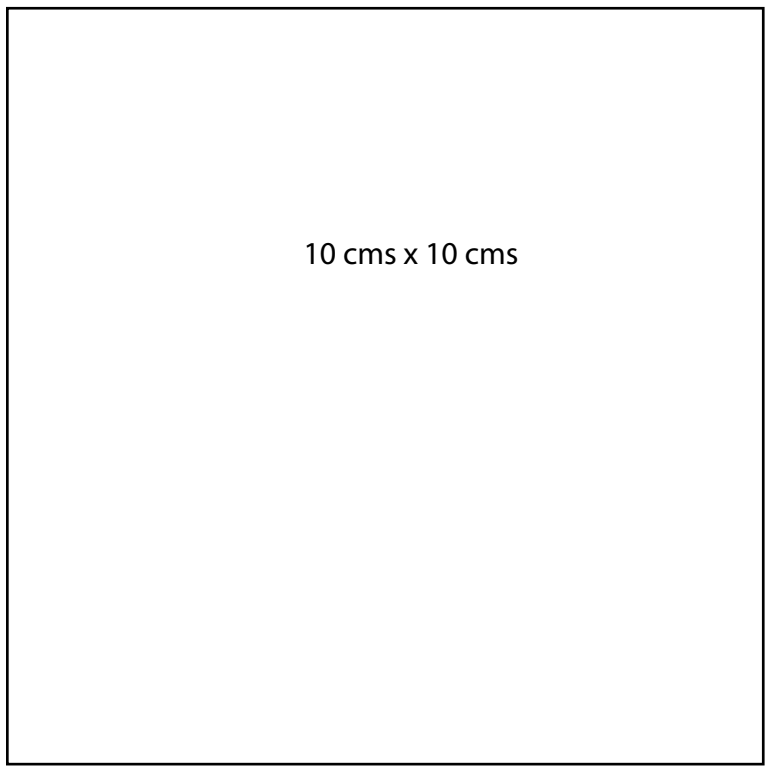
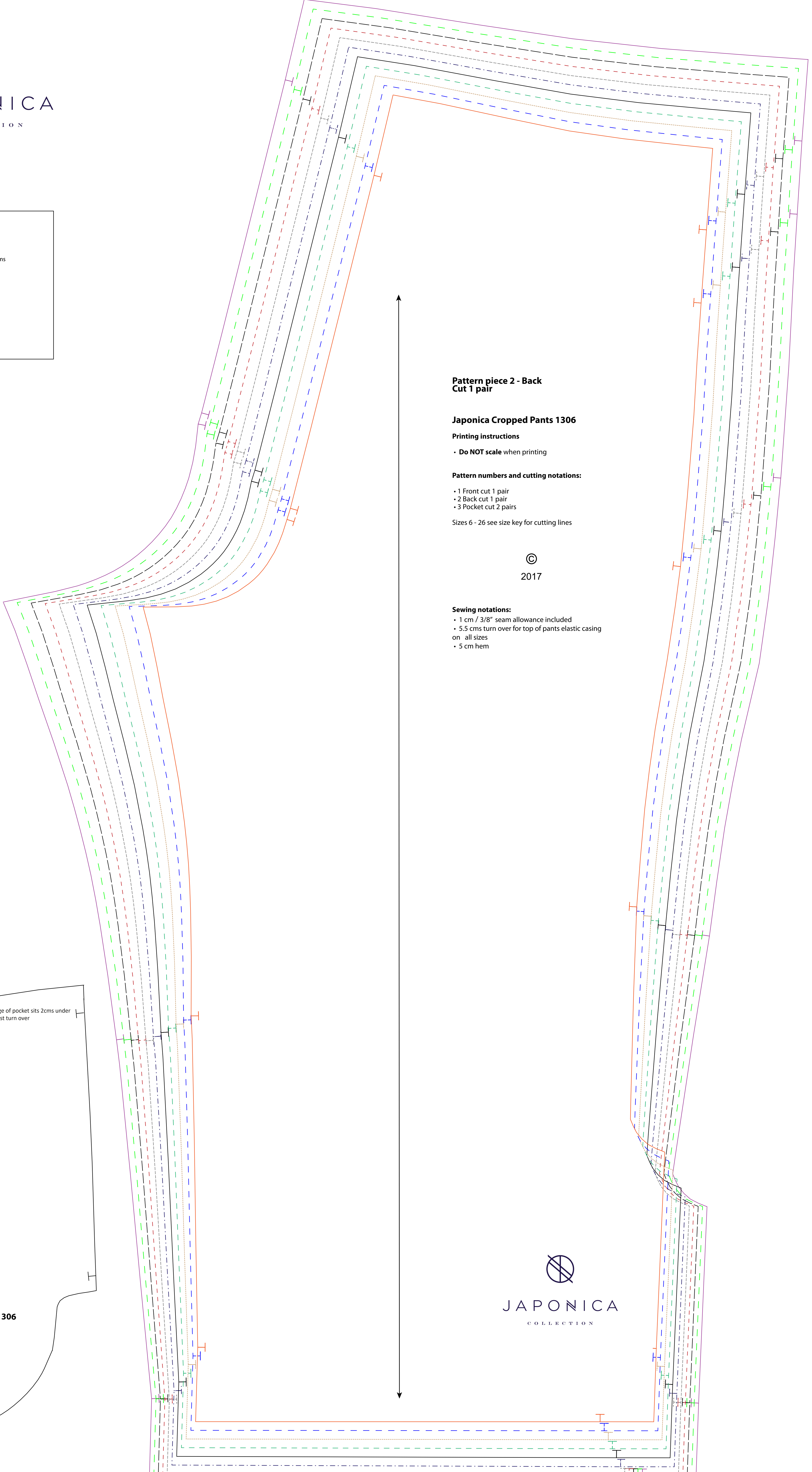


JAPONICA
COLLECTION



SIZE KEY	
6	— (solid red line)
8	- - - (dashed blue line)
10	· · · (dotted orange line)
12	- · - (dash-dot green line)
14	— (solid black line)
16	- · - (dash-dot purple line)
18	- · - (dash-dot grey line)
20	- · - (dash-dot red line)
22	- · - (dash-dot black line)
24	- · - (dash-dot green line)
26	- · - (dash-dot purple line)



Pattern piece 2 - Back
Cut 1 pair

Japonica Cropped Pants 1306

Printing instructions

- Do NOT scale when printing

Pattern numbers and cutting notations:

- 1 Front cut 1 pair
- 2 Back cut 1 pair
- 3 Pocket cut 2 pairs

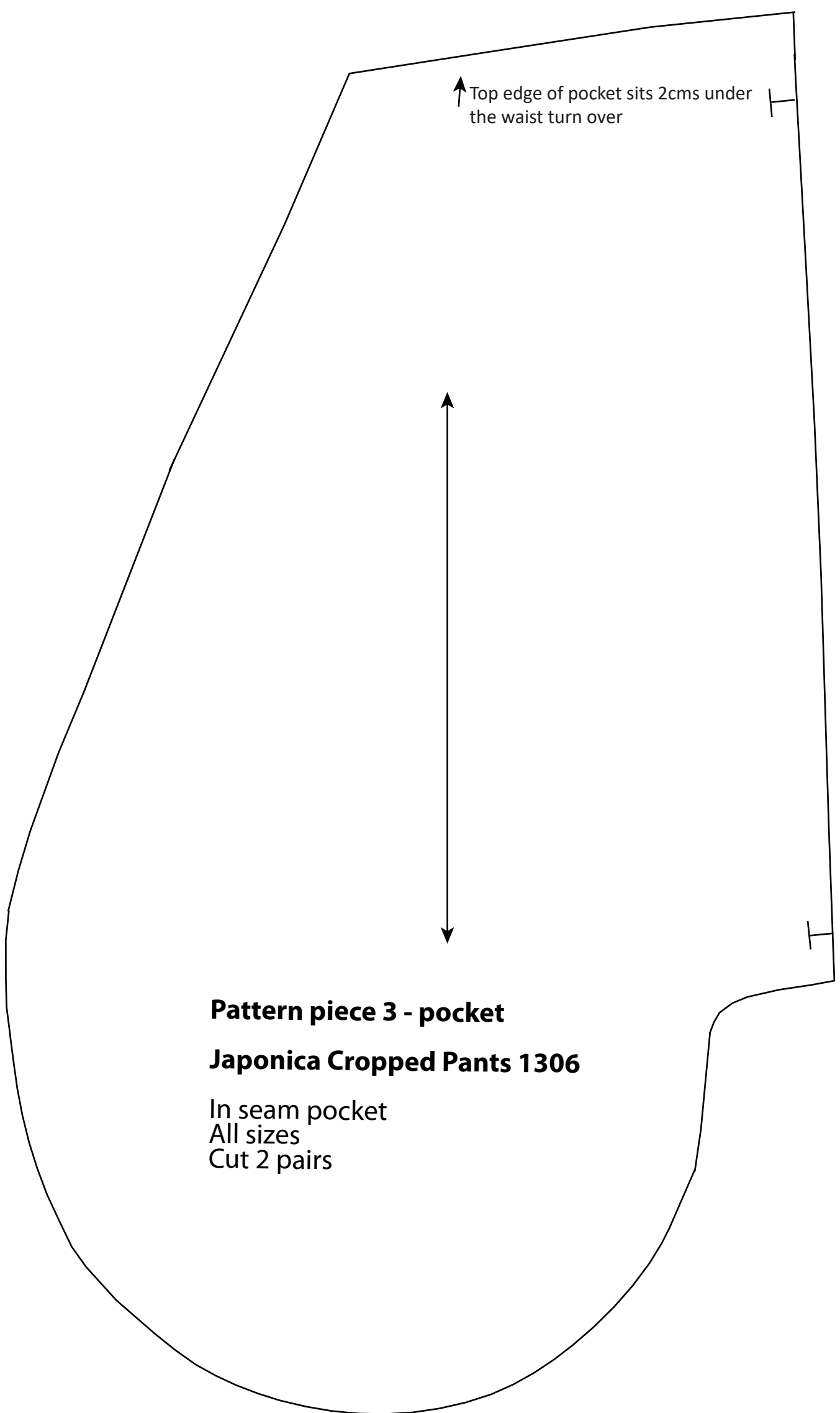
Sizes 6 - 26 see size key for cutting lines

©

2017

Sewing notations:

- 1 cm / 3/8" seam allowance included
- 5.5 cms turn over for top of pants elastic casing on all sizes
- 5 cm hem



Pattern piece 3 - pocket
Japonica Cropped Pants 1306

In seam pocket
All sizes
Cut 2 pairs

JAPONICA
COLLECTION